

PLAN BOTHNIA

A transboundary pilot plan for the Bothnian Sea



What is Plan Bothnia?

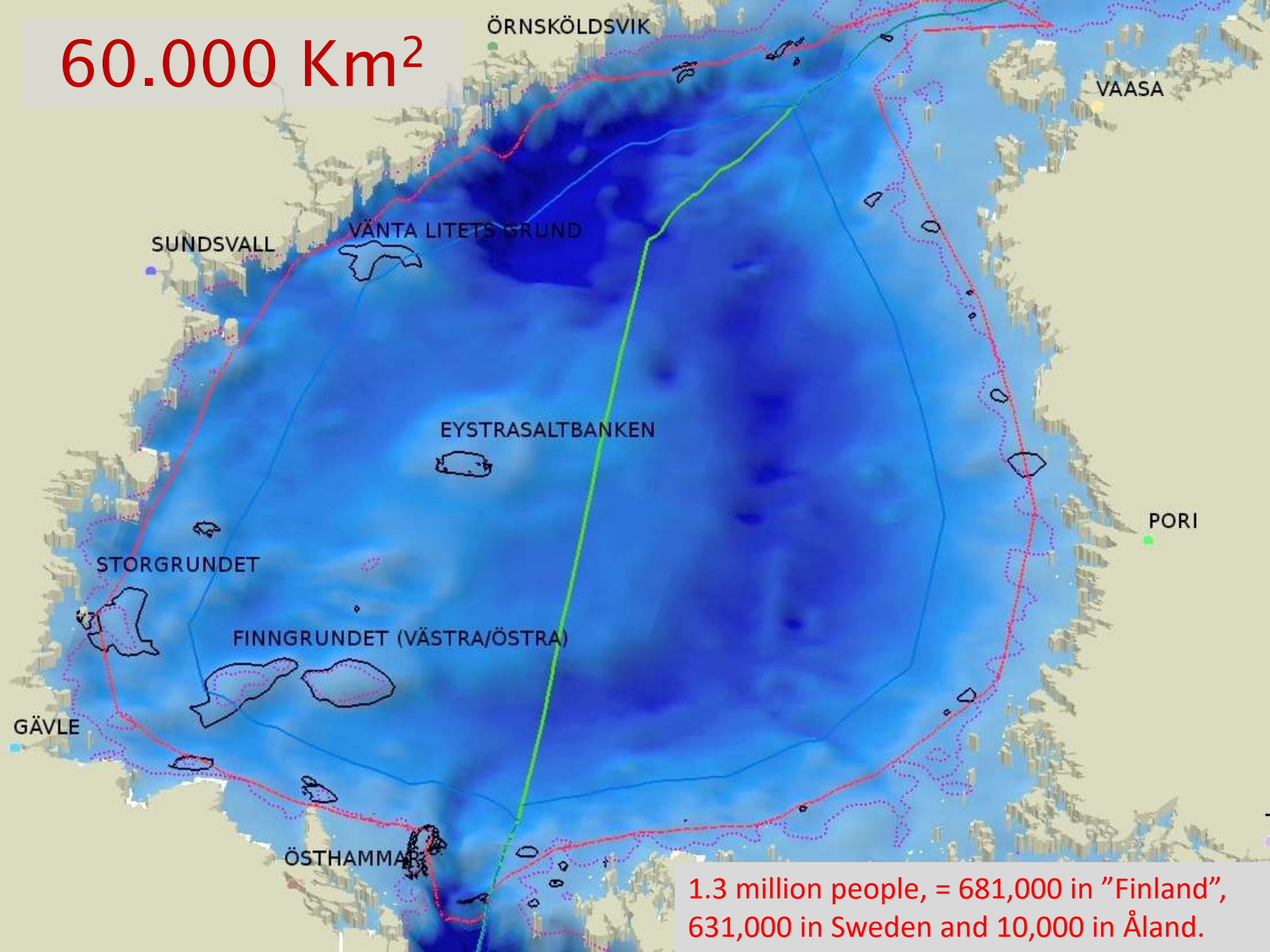
Test of transboundary marine planning

Focus on
Cooperation
and
Ecosystem



DG MARE
Co-funded under
European Integrated
Maritime Policy

60.000 Km²



1.3 million people, = 681,000 in "Finland",
631,000 in Sweden and 10,000 in Åland.

HELCOM



6 partners



10

regional councils
and other
institutions

2 ministries



How?

It started
(almost) from
scratch

December 2010

December 2011

May 2012

Phase 1
Data collection

Phase 2
Spatial Plan

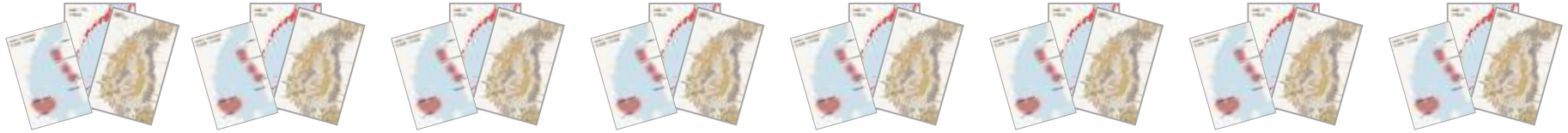
Southern Quark

Archipelago Sea

Northern Quark

The process

Data collection



Synthesis



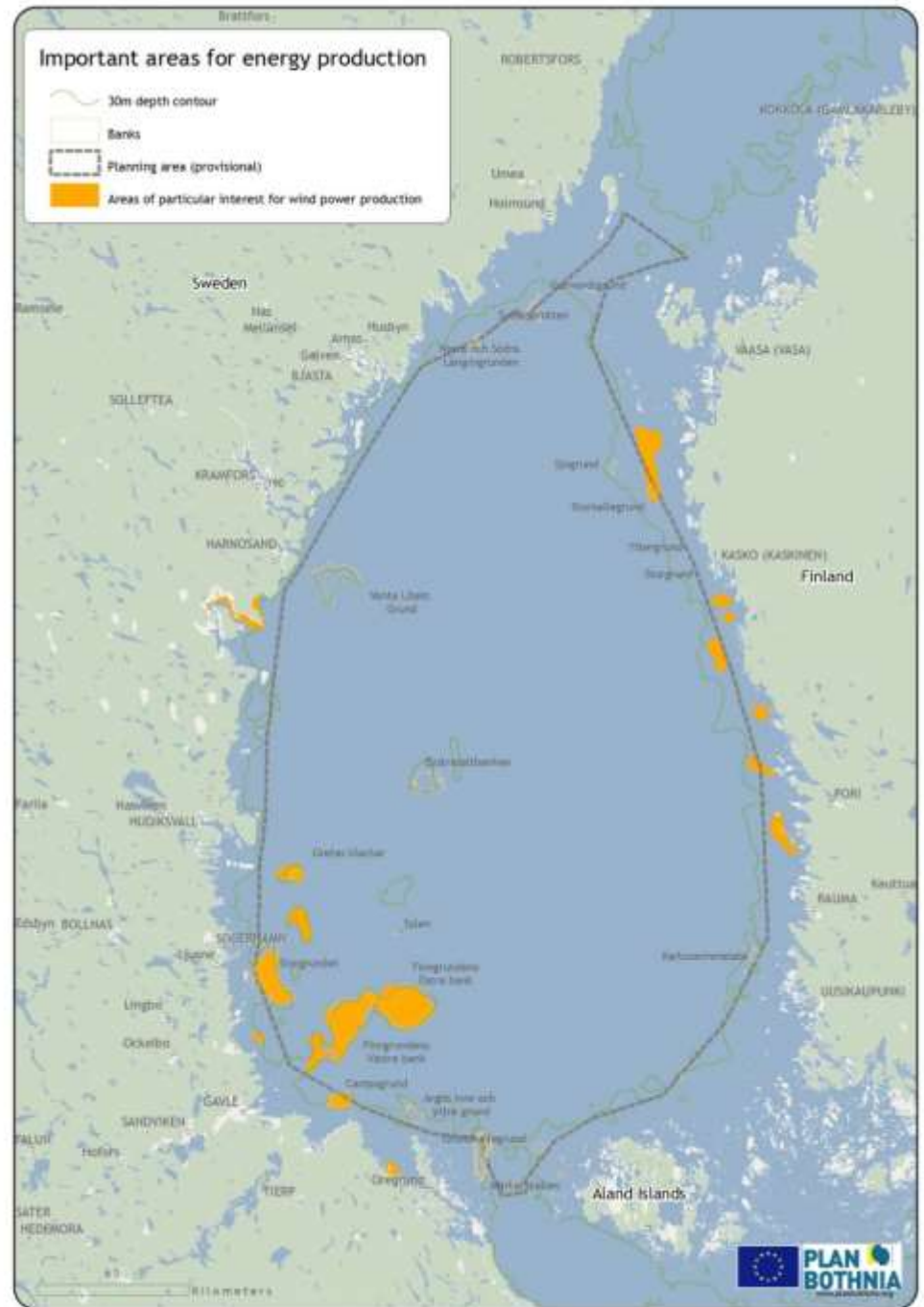
Overlaps



The pilot plan!

Some results!

Important areas for wind power

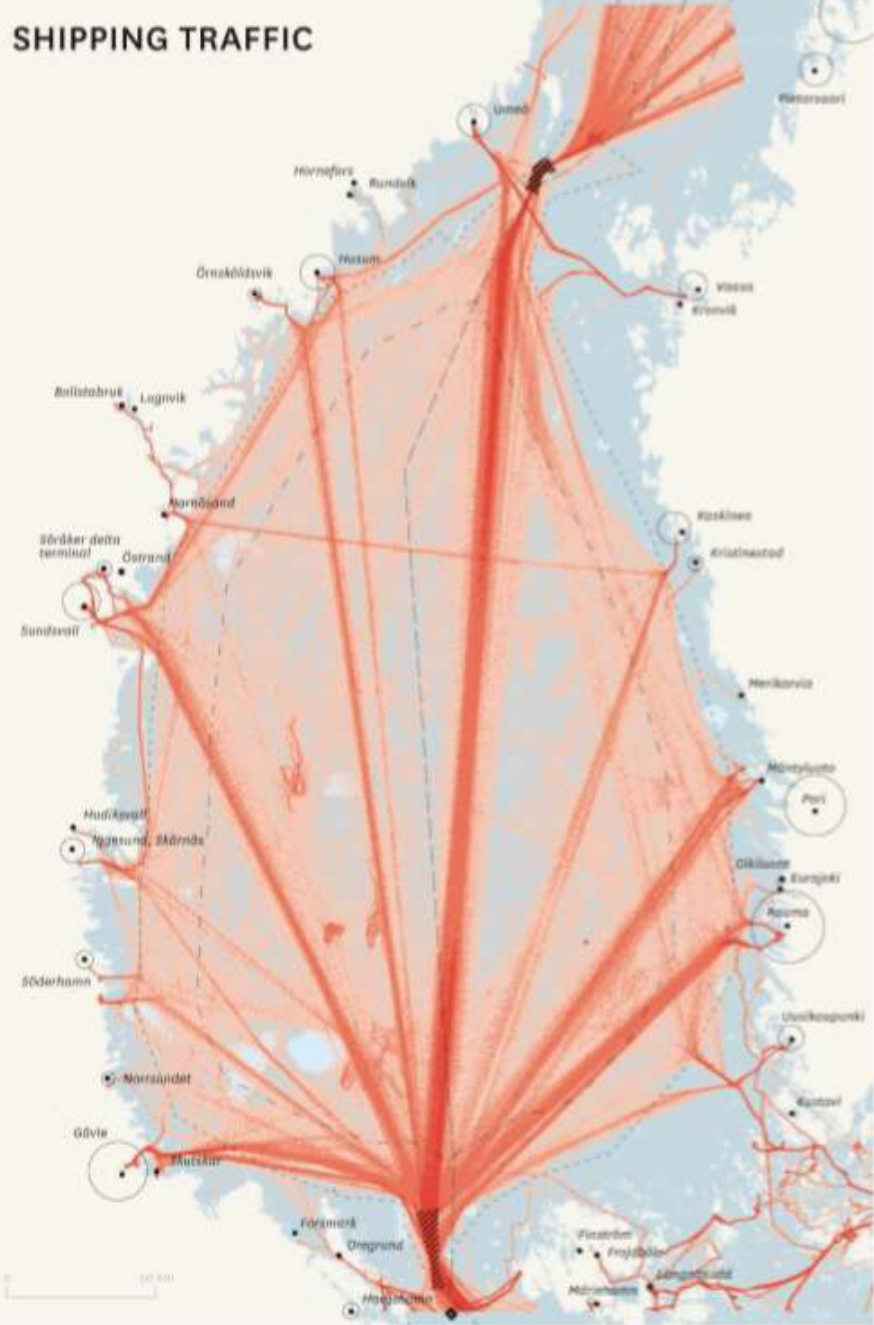


Important areas for marine traffic

PRODUCTS AND PORT VOLUMES
In million tonnes



SHIPPING TRAFFIC



Number of ships (July 2008 / June 2009)



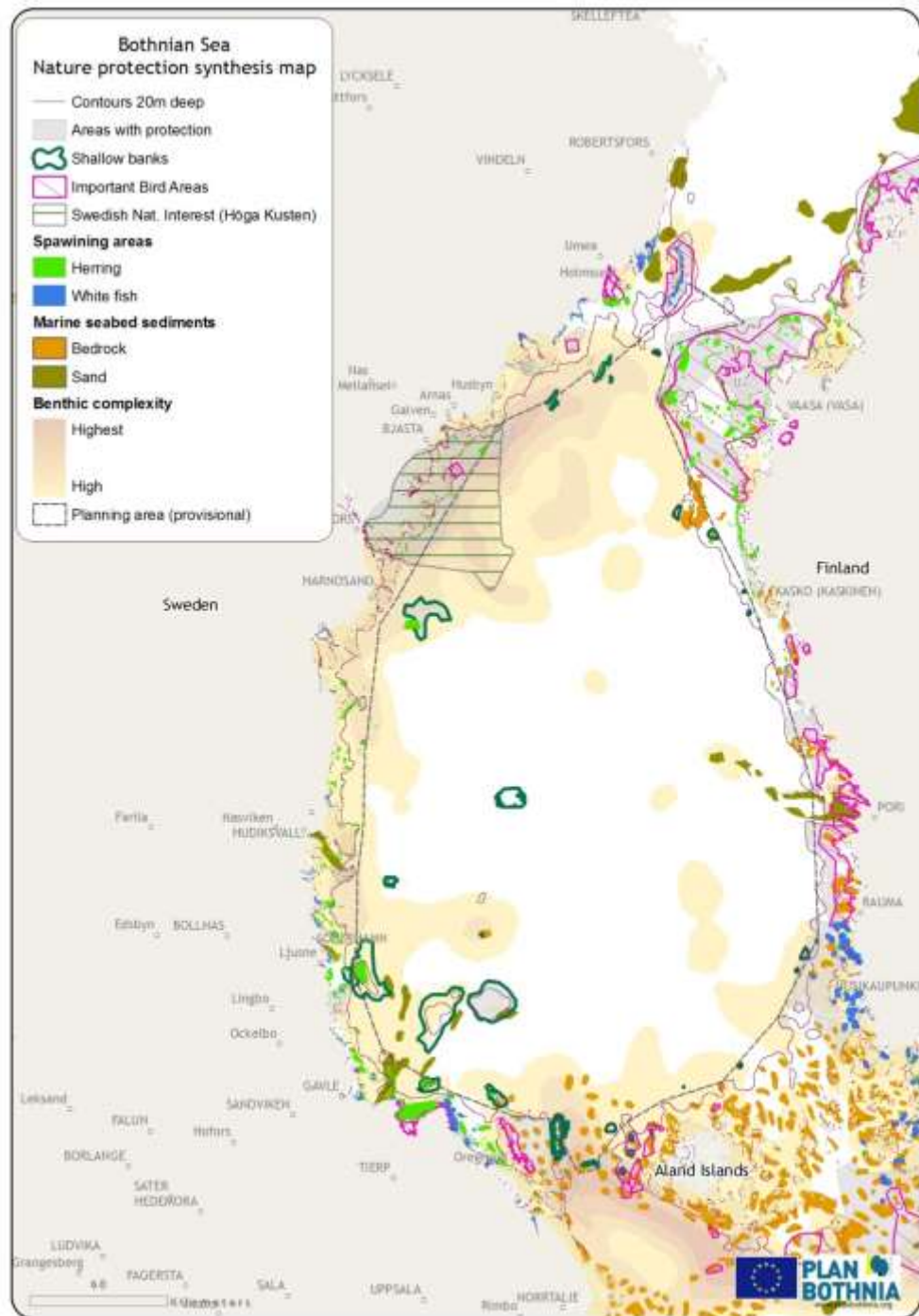
SHIPPING TRAFFIC
WINTER 2009*



SHIPPING TRAFFIC
WINTER 2010*

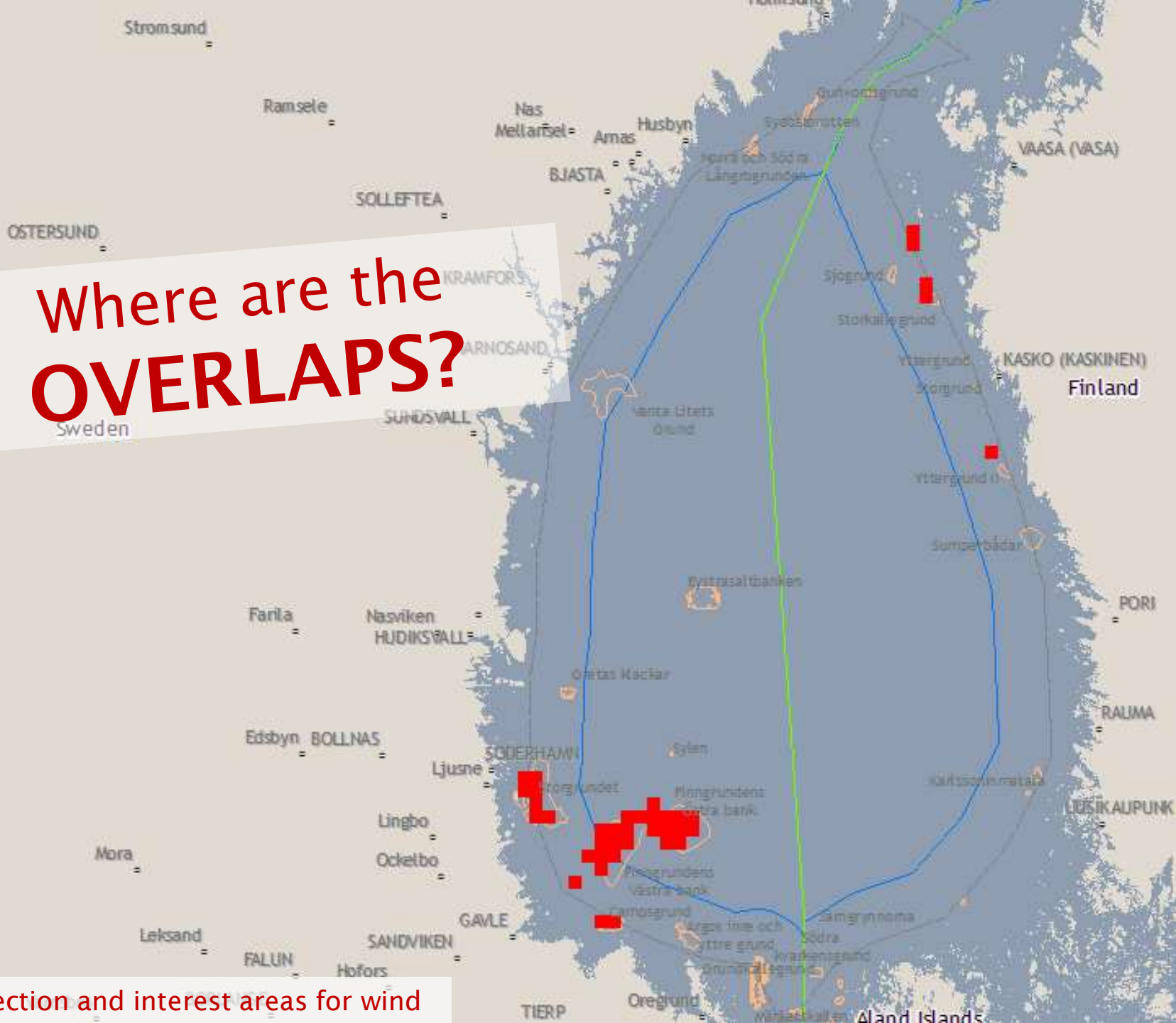


Important areas for nature protection

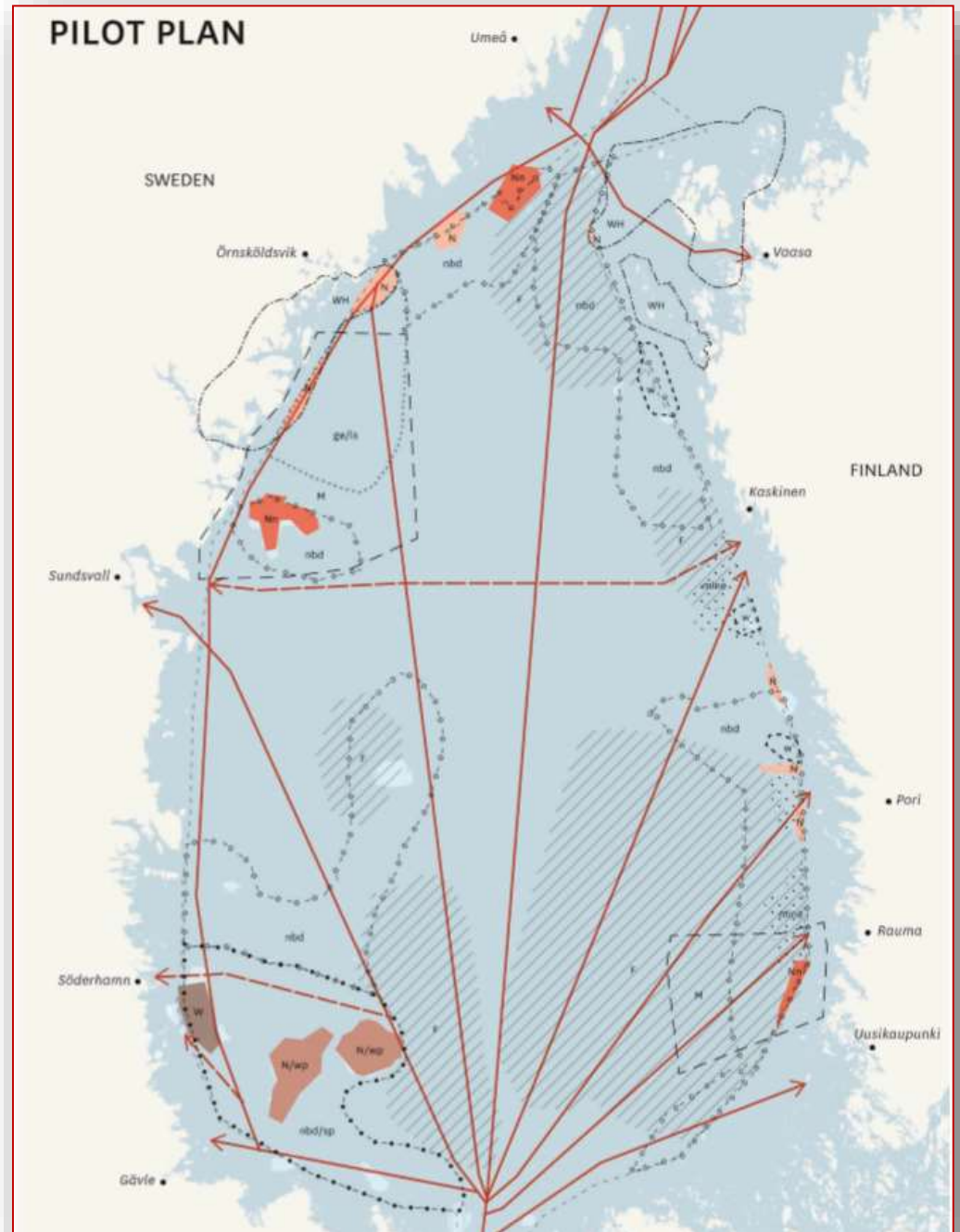


Where are the
OVERLAPS?

Nature protection and interest areas for wind



The pilot plan



Take home
messages?

We like sharing



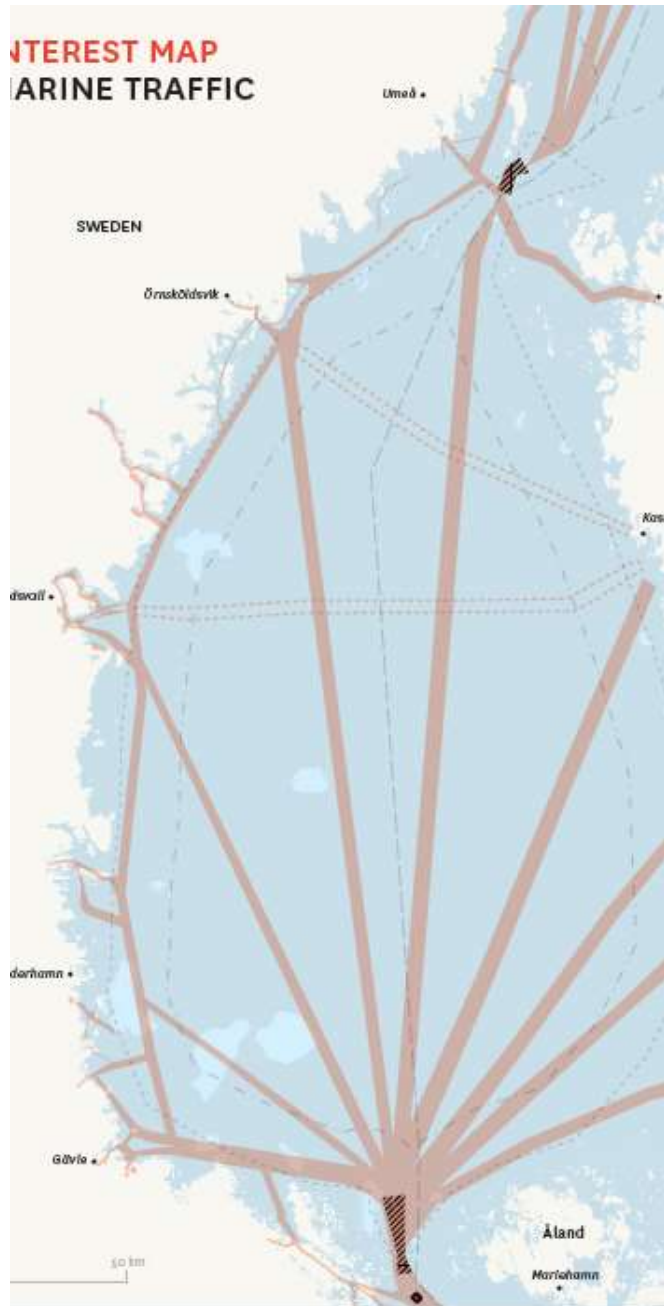
” Planning processes should be
open and **transparent** ”

” Data should be
openly accessible ”

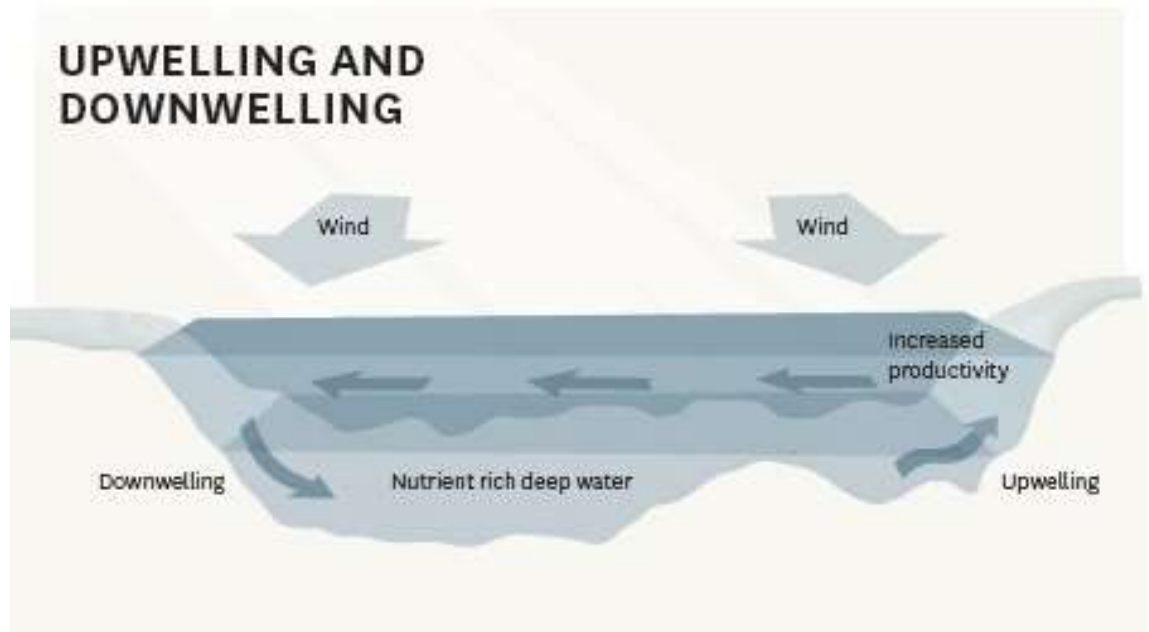
Differences in planning tradition



INTEREST MAP MARINE TRAFFIC



UPWELLING AND DOWNWELLING



Importance of
DATA VISUALIZATION

Thank you!

Greetings from Manuel!

