



Co-funded by the European Maritime and Fisheries Fund of the European Union

# FI-AX-SE Pan Baltic Scope

## What have we done?

Project manager Mari Pohja-Mykrä, Regional Council of Satakunta

Swedish Agency  
for Marine and  
Water Management



Ministry of Environmental  
Protection and Regional  
Development  
of the Republic of Latvia

DANISH MARITIME AUTHORITY



REPUBLIC OF ESTONIA  
MINISTRY OF FINANCE



Nordregio



SATAKUNTALIITTO  
The Regional Council of Satakunta



Ålands  
landskapsregering

**CROSS-BORDER  
COLLABORATION TO  
SUPPORT NATIONAL MSP**



Finland-Aland-Sweden  
Case



Follow-up of  
Common Framework



Lessons  
Learned



Monitoring and  
Evaluation



Planning  
Forum

**INTEGRATION  
OF LAND-SEA  
INTERACTION  
INTO MSP**



Land-Sea  
Interaction



Data Sharing



Cumulative  
Impacts



Ecosystem-Based  
Toolbox



Ecosystem-  
Based Approach  
in Sub-basin SEA



Economic and  
Social Analyses



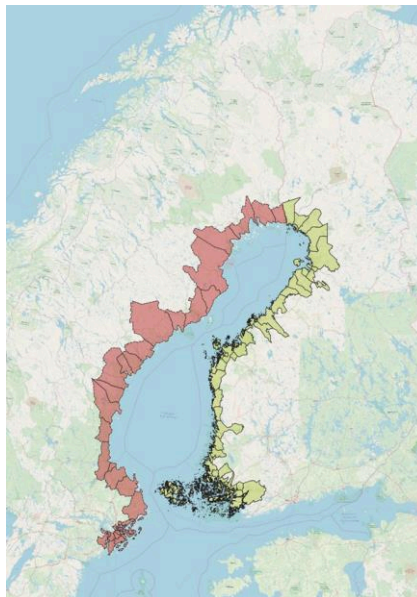
Green  
Infrastructure

**IMPLEMENTATION OF THE  
ECOSYSTEM-BASED APPROACH AND  
DATA SHARING**

# FIAXSE

## Finland – Åland - Sweden

Cross-border collaboration to support national MSP processes



- Subcase 1 – PanBothnia – Networking
- Subcase 2 – Stakeholder collision to support collaboration

# FI-AX-SE Subcase 2. Stakeholder collision to support collaboration

- Identify and acknowledge local knowledge of meaningful coastal and sea places and processes to enhance participatory MSP.
- Collaborative MSP process with local-level fish-stakeholders in RCS and Åland.
- The role of motivation and social trust in MSP process.

Task	Method	Focus
Multidimensional communication platform	Social media - Facebook	Local-level fish-related stakeholders
Collect, value and use <i>local knowledge</i>	Participatory GIS Face-to-face-meetings	Local-level fish-related stakeholders
Collide local-level fish-stakeholders with other marine stakeholders	Participatory methods	Local and <i>regional</i> level marine stakeholders
Evaluate <i>social trust</i> and <i>motivation</i> to participate	Questionnaire - Analysis	Local-level fish-related stakeholders



# “Should I rely on this person?”

Trust constitutes a fundamental factor in the development of secure human relations.

*Social trust* describes the willingness to rely on those who are formally responsible for developing policies and taking measures. - Cvetkovich & Winter, 2003



# “Should I rely on this institution?”

*Institutional trust* describes the willingness to rely on institutions such as police, judicial system, political decision-making – is there corruption, will things go smoothly, do they use the best knowledge, do they treat people equally.

Institutional trust has cultural variations.





# How do you create the climate of trust?

“The conscious decision by *two people* or *groups* to understand and take seriously the interests of the others is the foundation of trust.

Now it is possible to explore how your interests and mine can be satisfied.”

- Robert McCarthy



## Regional Council of Satakunta:

- Face-to-face meetings with local-level fish-stakeholders during the spring 2019.
- Mapping of meaningful places and processes.
- Validating the national level findings of important fishing places.
- Two-way communication.
- Regional-level seminar on findings, colliding fishers with other marine actors.







Havsplanering på Åland - Vad innebär det?

Etusivu

Sinistä kasvua kalasta - Satakunta

Suljettu ryhmä



Toimii käyttäjänä Satakuntaliitto

Tietoja

Keskustelu

Jäsenet

Tapahtumat

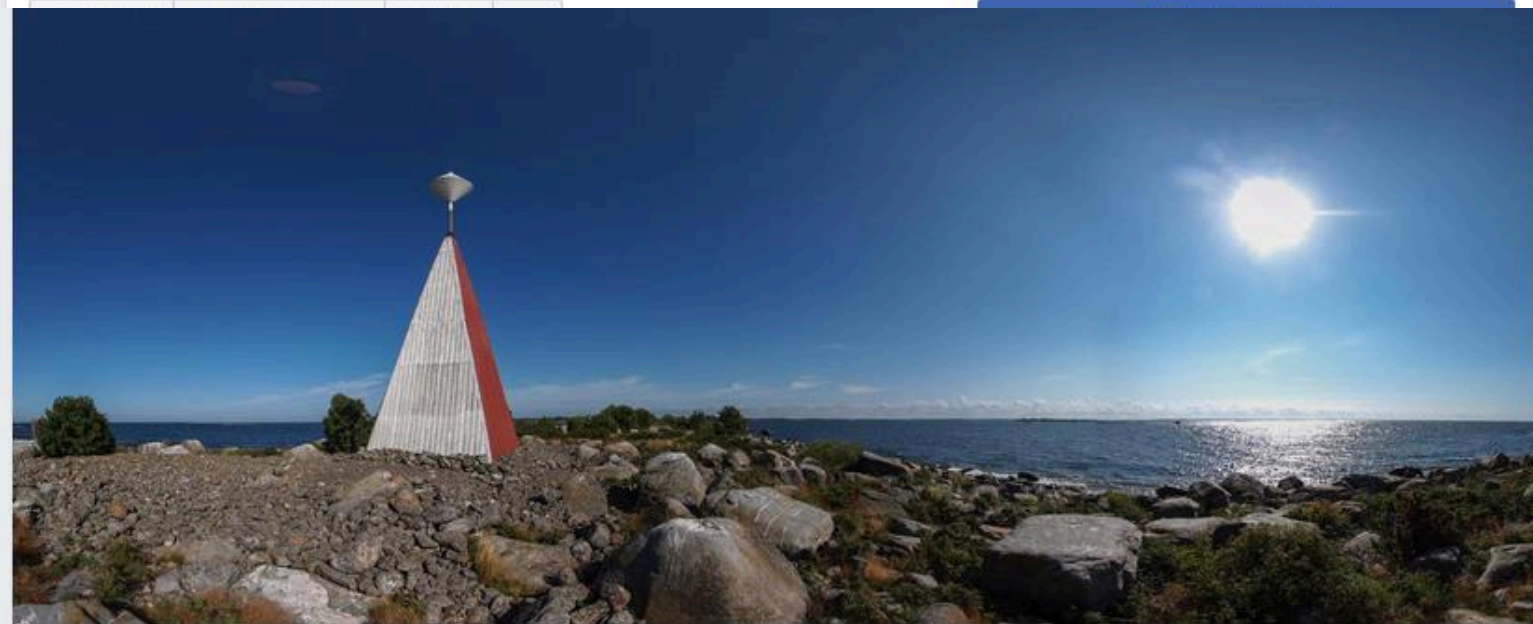
Kuvat

Valvo ryhmää

Hae tästä ryhmästä



Pikalinkit



Olet jäsen ▾

✓ Ilmoitukset

↪ Jaa

⋮ Lisää



Kirjoita julkaisu



Kuva tai video



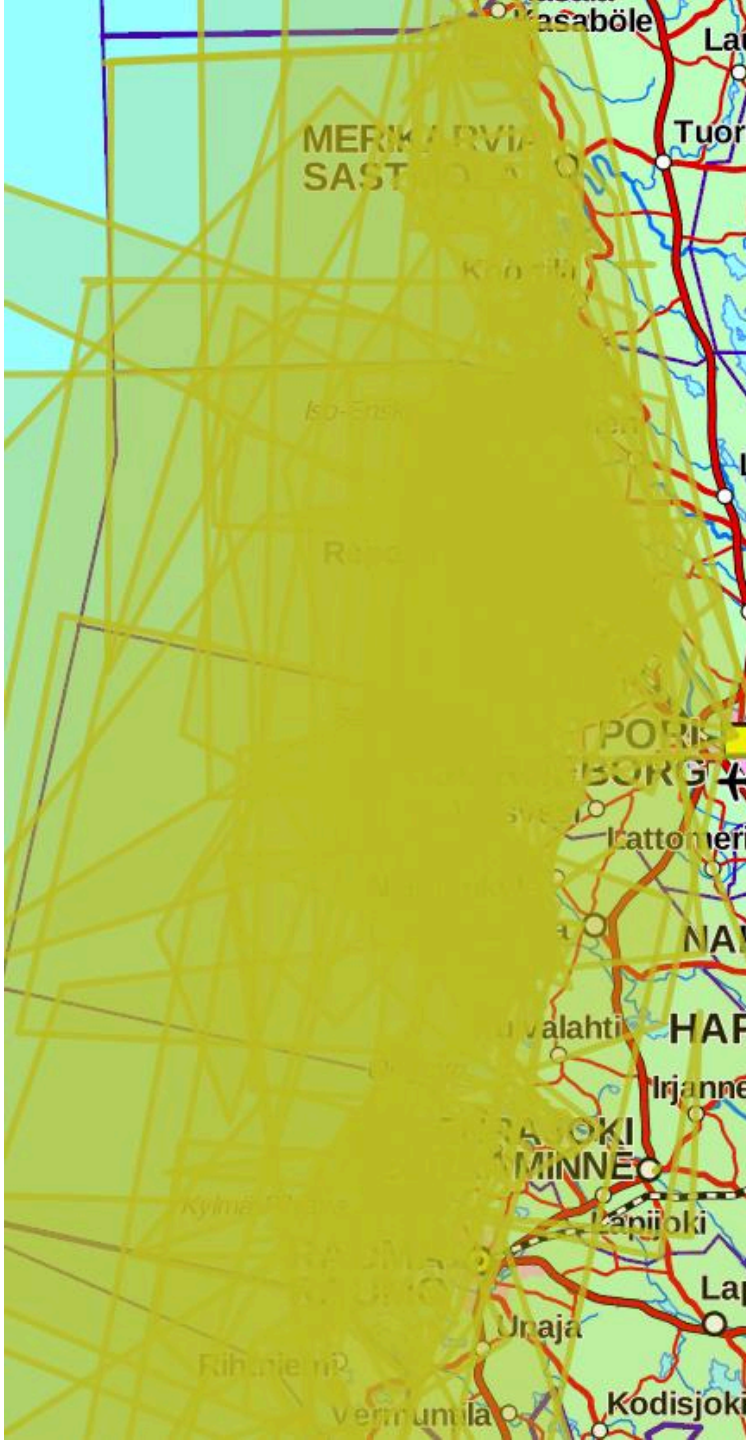
Live-video



Lisää

RYHMÄ SIVULTA





## Data

- RCS: 467 respondents, 840 map markings
- Åland: 361 respondents, 450 map markings

## Themes

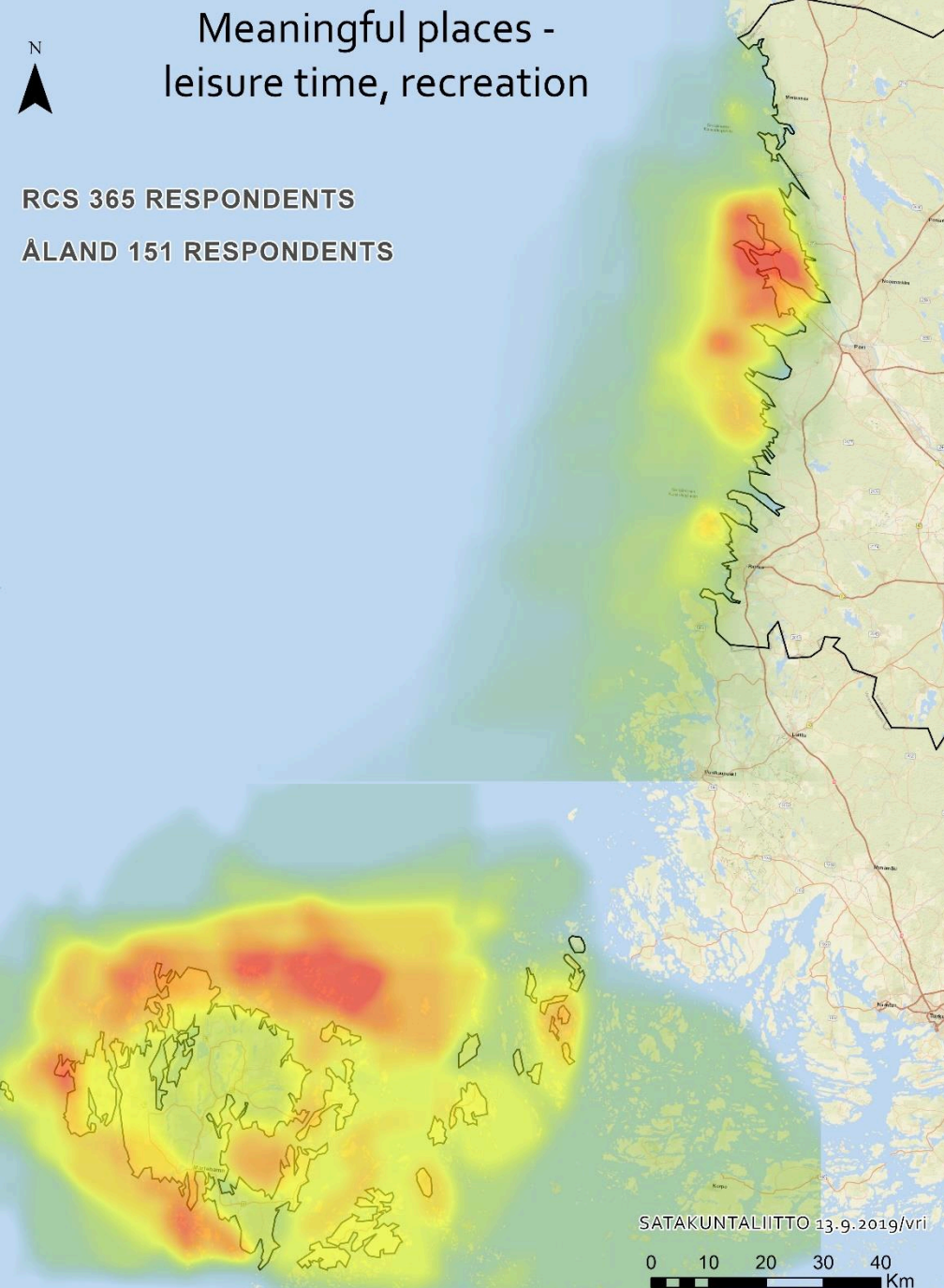
- ❖ Meaningful place for your livelihood
- ❖ Meaningful place for your leisure time and recreational activities
- ❖ Meaningful place for nature and cultural values
- ❖ Emotionally meaningful place for you
- ❖ Place where you have noticed conflicting interest



# Meaningful places - leisure time, recreation



RCS 365 RESPONDENTS  
ÅLAND 151 RESPONDENTS



## ❖ Meaningful place for your leisure time and recreational activities

- Where?
- For who?
- Why?
- When?
- What is needed to maintain it?
  
- Lots of activities
- Aesthetic values
- Social relations and values  
(family, friends, childhood)
- Relaxing/peaceful place
- Summer cottage
- Nature and cultural values



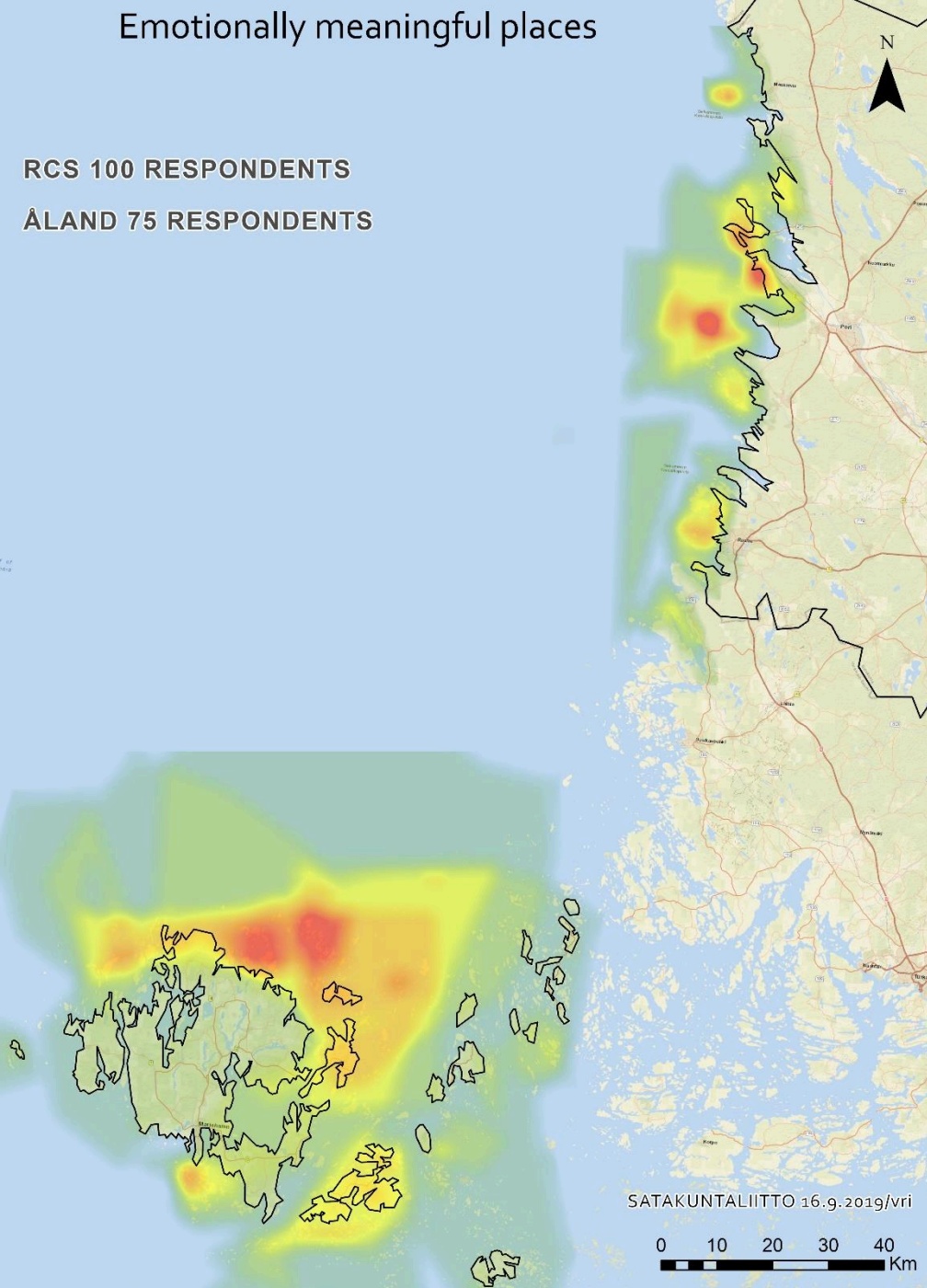
Sources: Esri, HERE, Garmin, USGS, Intermap, INCREMENT P, NRCan, Esri Japan, Esri Korea, Esri (Thailand), NGCC, (c) OpenStreetMap contributors, and the GIS User Community



# Emotionally meaningful places

RCS 100 RESPONDENTS

ÅLAND 75 RESPONDENTS



❖ Emotionally meaningful place for you, e.g.

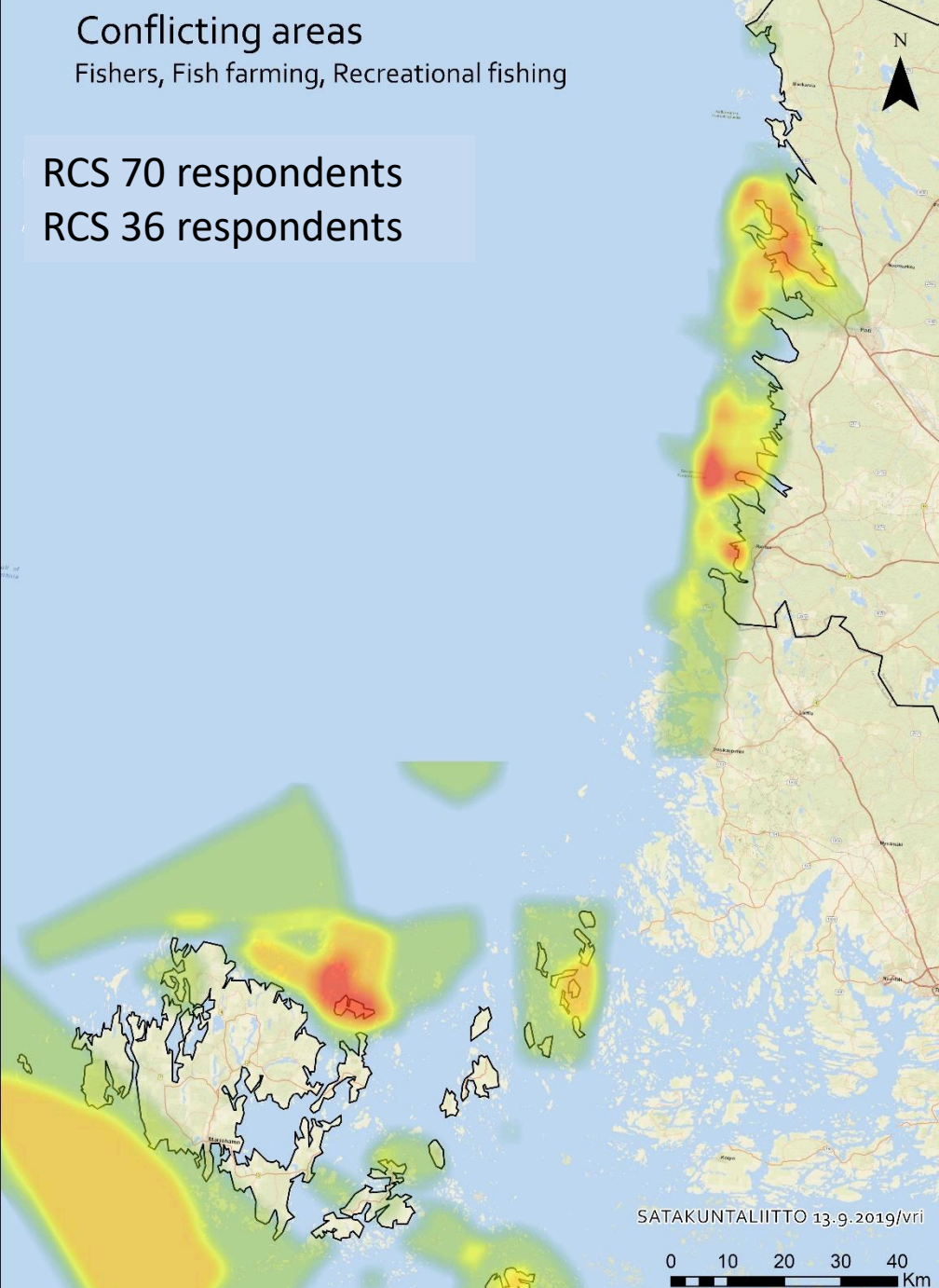
- ✓ Aesthetic values
- ✓ Social relations and values (family, friends, childhood)
- ✓ Recreation and refreshment
- ✓ Relaxing/peaceful place
- ✓ Spiritual values
- ✓ Negative feelings

# Conflicting areas

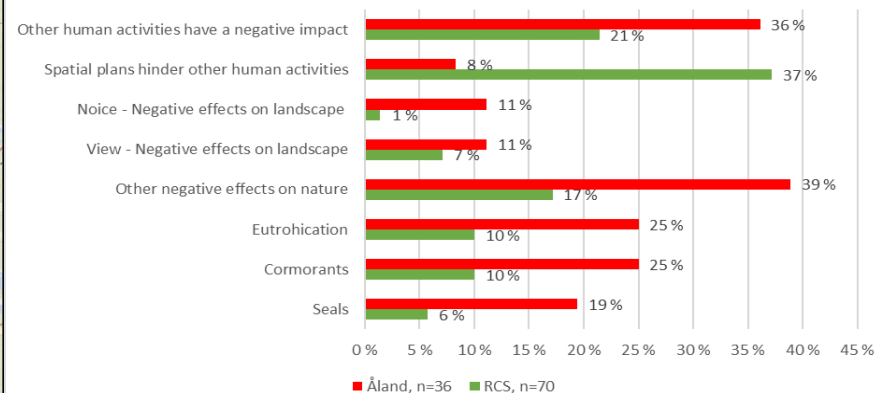
Fishers, Fish farming, Recreational fishing

RCS 70 respondents

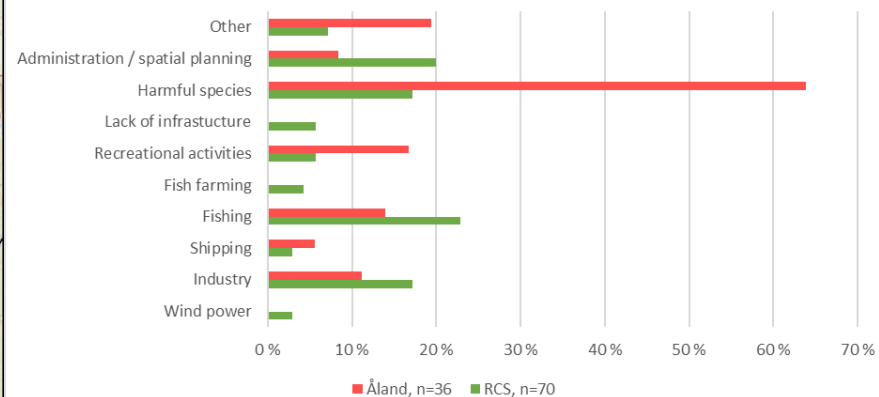
RCS 36 respondents



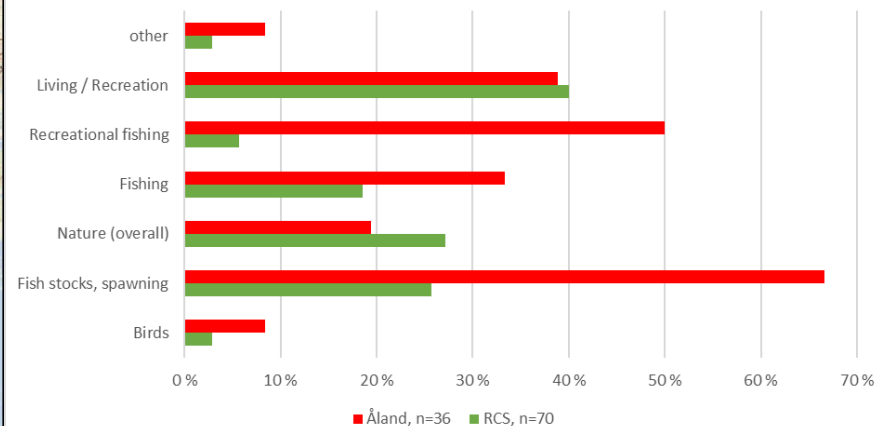
## Fishers, Fish farming, Recreational fishing



## What is causing the harm?



## Who is harmed?



# Motivation to participate to MSP and Trust among fish-stakeholders towards MSP authorities - Mean Values FI-AX

■ AX (n=81) ■ FI (n=36)





**Is there change in trust or motivation levels?**



SAVE THE DATE

MARITIME SPATIAL  
PLANNING FORUM

GLOBAL MEETS REGIONAL

19 - 21 November 2019  
Riga, Latvia



[www.panbalticscope.eu](http://www.panbalticscope.eu)  
[www.mspglobal2030.org](http://www.mspglobal2030.org)

Filling the gaps  
to create better national  
maritime spatial plans



Swedish Agency  
for Marine and  
Water Management



Co-funded by the  
European Maritime and  
Fisheries Fund of the  
European Union

Thank you and welcome!



[www.panbalticscope.eu](http://www.panbalticscope.eu)



Ministry of Environmental  
Protection and Regional  
Development  
of the Republic of Latvia

DANISH MARITIME AUTHORITY



S Y K E



REPUBLIC OF ESTONIA  
MINISTRY OF FINANCE



Nordregio



SATAKUNTALIITTO  
The Regional Council of Satakunta



Ålands  
landskapsregering